



INTO THE DEEP





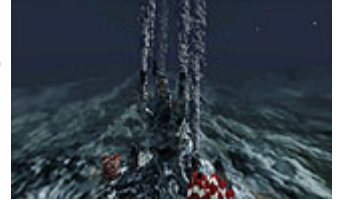
Into The Deep

Explore the depths of the ocean!

Dive with the pioneers of deep-sea research on their journeys of discovery, on the most famous submersibles in history, to come face-to-face with the fascinating creatures that survive where no life was ever expected — *Into The Deep!*

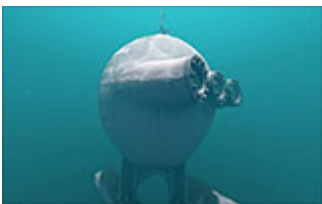
The deep sea is one of the most mysterious and little-explored regions of Earth. We know more about the surface of the Moon than we do about the wonders hidden beneath the waves of our planet's seas.

The deepest parts of our oceans teem with life forms so strange-looking they could be from the realm of science fiction. These fantastic creatures inhabit a realm of underwater volcanoes, engulfed mountain ranges, and vast trenches cut into the crust of the planet.



Into the Deep is a breathtaking journey of sea exploration originally created by Ogrfish Filmproductions, adapted and re-narrated by Loch Ness Productions. It combines marine biology, underwater geology and a history of deep-sea exploration.

The show shares glimpses of rarely seen marine organisms: biolumnescent frogfish, jellyfish, vampire squid, viperfish, pelican eels, and the mysterious fangtooth — all perfectly adapted to the extreme pressures and temperatures of their alien environment.



In addition to teaching about marine biology and ocean exploration, *Into the Deep* documents submersible exploration, and describes the basic physical principles that allow humans to venture safely into these otherworldly landscapes. Audiences will experience the dive of *Trieste* to the Challenger Deep, the lowest point of the Mariana Trench in the South Pacific. This region is regarded as one of the most challenging for divers on Earth.

The show presents the evolution of deep-sea diving vessels used to explore the ocean environment. The 1930 mission by William Beebe and Otis Barton marked humanity's first true exploration of the depths. Recent dives are recounted, from Robert Ballard's journey to the *RMS Titanic* (which sank in 1912) to filmmaker James Cameron's recent solo dive into the Mariana Trench — all are expanding our understanding of the deep-sea environment.

Into the Deep is an exciting, engaging and engrossing exploration of Earth's oceans, using the immersive power of the dome theater to transport audiences to the spectacular hidden depths of our home planet.

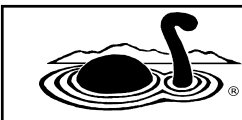


Running time: **31:30** Year of production: **2012**
 Suitable for: **General public**
 Educational content: **Marine biology, oceans, astronomy, exploration, environment, nature**

Public performance of this show requires the signing of a License Agreement.

<i>Into The Deep</i>			
MOVIE SIZE	RESOLUTION	50-YEAR LICENSE	PRODUCT CODE
SMALL/MEDIUM	single channel, smaller than 2000 pixels	\$4,700	OGR1-S
LARGE/X-LARGE	single channel, larger than 2000 pixels	\$12,000	OGR1-L
SLICED	multiple channels, pre-sliced	\$20,000	OGR1-G

PRICES INCLUDE encoding/formatting and slicing for most fulldome systems. Contact us for details.



LOCH NESS PRODUCTIONS P. O. BOX 924 NEDERLAND, COLORADO 80466 USA
 Phone: +1 303 642 7250 Toll-free: 1-888-4-NESSIE
 Email: info@lochnessproductions.com Web site: www.lochnessproductions.com

Revised 25 March 2023