

# EXPEDITION Reef

Learn the secrets of coral reefs as you embark on an oceanic safari of the world's most vibrant—and endangered—marine ecosystems.

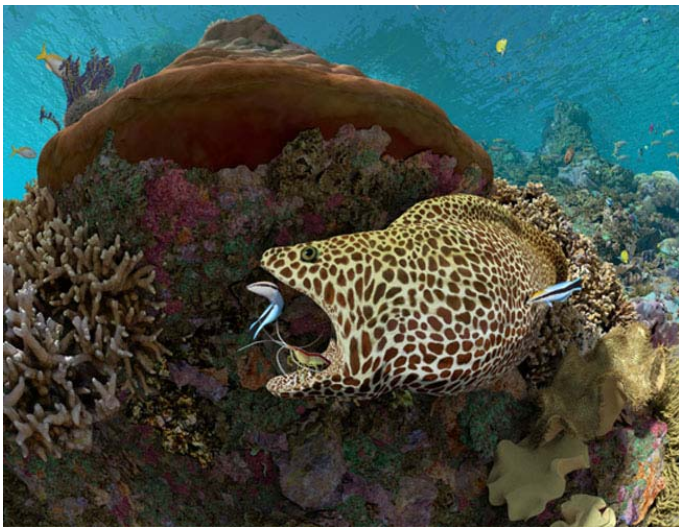
*Narrated by Lea Salonga*



Distributed by  
**LOCH NESS  
PRODUCTIONS**



CALIFORNIA  
ACADEMY OF  
SCIENCES



# Expedition Reef

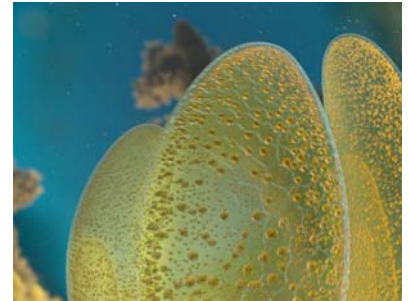
*Hope for reefs in a changing world*

Narrated by Lea Salonga

The Academy's 2018 full-dome show reveals the breathtaking beauty and biodiversity of coral reefs in exquisite detail — and the actions scientists are taking to restore and preserve them.

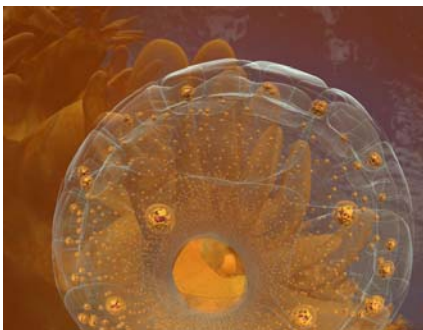
Learn the secrets of the "rainforests of the sea" as you and your visitors embark on an oceanic safari to the world's most vibrant — and endangered — marine ecosystems.

**Expedition Reef**, narrated by Tony Award® winner Lea Salonga, will immerse audiences in an undersea adventure. This full-dome planetarium show provides



an up-close look at a part of our planet many people have never experienced. Discover how corals grow, feed, reproduce, and support over 25% of all marine life on Earth — while facing unprecedented threats from climate change, habitat destruction, and overfishing.

**Expedition Reef** starts at the Academy's Philippine Coral Reef exhibit. Thousands of tropical fish and colorful corals thrive in one of the largest and deepest indoor displays of living corals. Then, we venture across the globe and below the ocean's surface to learn about the biology of corals, and how reefs support some of the planet's most complex food webs.



We come face-to-face with slithering moray eels being groomed by dutiful cleaner shrimp and wrasses; a Trapezia crab squares off with a crown-of-thorns starfish; and other-worldly nudibranchs dine on tasty meals of sponges.

These vivid scenes result from hundreds of hours of animation design, production, and collaboration between scientists and the visualization team, referencing 360° footage and high-resolution images collected by Academy divers.



The incredible level of detail in **Expedition Reef** is backed by cutting-edge research from biologists and oceanographers worldwide. Their work shows that global coral reefs are being pushed to their limits.

For a truly global perspective, the show also visualizes the network of reefs on a planetary scale. Although they line about a third of tropical coastlines, reefs comprise less than one percent of the world's ocean environments, showing how precious and fragile these systems are. Scientists are racing the clock to develop sustainable solutions before these areas disappear forever. Their research and recommendations can inform public policy decisions through this show.

**Expedition Reef** is a compelling and important story to tell. General audiences as well as students on specialized school visits will gain an appreciation of the splendor of the reefs. We invite you to license this show for your dome today!

Running time: **25:40**

Suitable for: **General Public**

Information about: **Coral reefs, marine ecosystems**

Year of production: **2018**

## Expedition Reef

MOVIE SIZE	RESOLUTION	1-YEAR LICENSE	PRODUCT CODE	3-YEAR LICENSE	PRODUCT CODE	10-YEAR LICENSE	PRODUCT CODE
SMALL/MEDIUM	single channel, smaller than 2000 pixels	\$5,000	CAS7-S1	\$7,500	CAS7-S3	\$9,500	CAS7-S
LARGE/X-LARGE	single channel, larger than 2000 pixels	\$9,000	CAS7-L1	\$13,500	CAS7-L3	\$17,000	CAS7-L
SLICED	multiple channels, pre-sliced	\$18,000	CAS7-G1	\$27,000	CAS7-G3	\$34,000	CAS7-G

PRICES INCLUDE encoding/formatting and slicing for most full-dome systems. Contact us for details.



LOCH NESS PRODUCTIONS P. O. BOX 924 NEDERLAND, COLORADO 80466 USA

Phone: +1 303 642 7250 Toll-free: 1-888-4-NESSIE

Email: [info@lochnessproductions.com](mailto:info@lochnessproductions.com) Web site: [www.lochnessproductions.com](http://www.lochnessproductions.com)

Revised 25 March 2023